

# MONTHLY MEMBERSHIP PROGRESS REPORT

District 9 EC

Results as of: 4/30/2024

GMT:

LOCATION IOWA

GMT CA

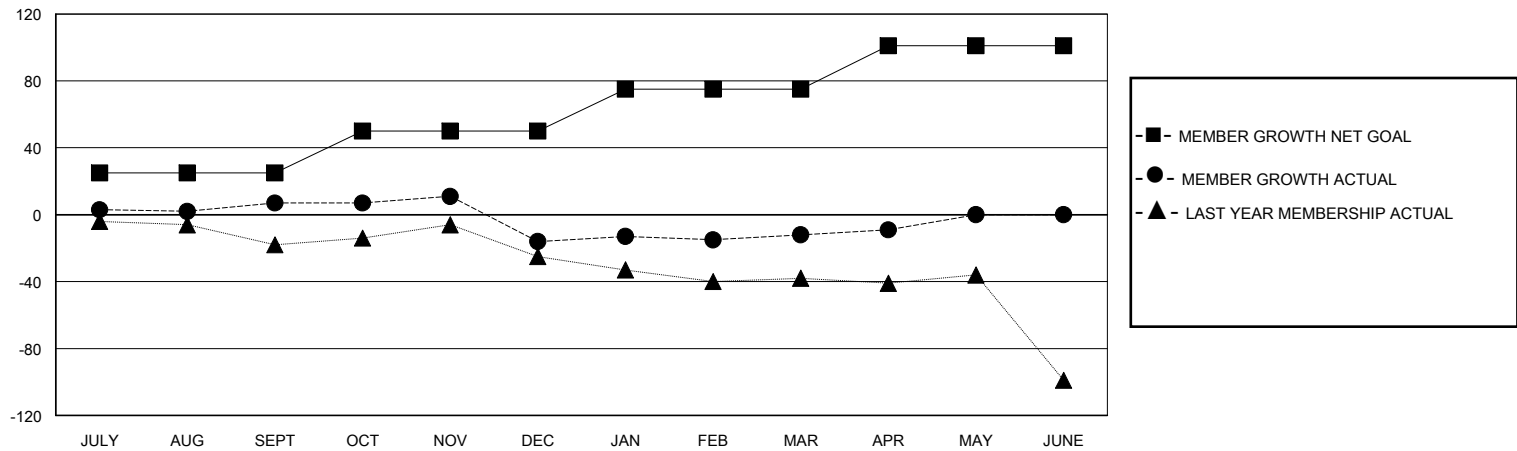
Clubs			
RESULTS FOR 2023-2024			
QUARTER	NEW CLUB GOAL	NEW CLUBS	DROPPED CLUBS
JULY/AUG/SEPT	0	0	0
OCT/NOV/DEC	0	0	0
JAN/FEB/MAR	0	0	0
APR/MAY/JUNE	1	0	0

Members			
RESULTS FOR 2023-2024			
QUARTER	MEMBER GROWTH NET GOAL	MEMBER GROWTH ACTUAL	DROPPED MEMBERS ACTUAL (including transfers)
JULY/AUG/SEPT	25	25	17
OCT/NOV/DEC	25	24	42
JAN/FEB/MAR	25	19	11
APR/MAY/JUNE	26	7	3

GOALS AND ACTUAL NEW CLUBS CUMULATIVE



GOALS AND ACTUAL MEMBERS CUMULATIVE



DROPPED CLUBS: 0	22 CLUBS OF 42 ADDED 1 OR MORE NEW MEMBERS	<b>GENDER DISTRIBUTION</b> MALE 761 (67.83%) FEMALE 361 (32.17%)
<b>DROPPED MEMBERS</b> DECEASED 14 CLUB CANCELLED 0 OTHER 59 TOTAL 73	<a href="#">CLICK HERE FOR CUMULATIVE MEMBERSHIP DATA</a>	TOTAL FAMILY UNIT MEMBERS 298 FAMILY MEMBERS PAYING HALF DUES 153